



# **SAILING INSTRUCTIONS**

## **Open Dutch Championship**

### **Olympiajol class**

Organised by **Zeilvereniging Zuidlaardermeer**  
under the auspices of the Royal Netherlands Watersport Association (RNWA)  
from August 22 to August 25 (inclusive) 2025  
location: Zuidlaardermeer, the Netherlands

---

The notation '[NP]' in a rule means that a boat may not protest another boat for breaking that rule. This changes RRS 60.1.

## **1. RULES**

- 1.1\*** The event is governed by the rules as defined in *The Racing Rules of Sailing (RRS)*.
- 1.2** In addition to the Notice of Race the following *Rules* are changed: RRS A5.1, A5.2 and A10, RRS 35, RRS 60.1, RRS 61.4 (b)(1), RRS 28

## **2\* CHANGES TO SAILING INSTRUCTIONS**

- 2.1** Any change to the sailing instructions will be posted before 09.00 hr. on the day it will take effect, except that any change to the schedule of races will be posted by 20.00 hr. on the day before it will take effect.


## **3 COMMUNICATIONS WITH COMPETITORS**

- 3.1** Notices to competitors will be posted on the official notice board located inside the clubhouse of Zeilvereniging Zuidlaardermeer.
- 3.2** The race office is located at Zeilvereniging Zuidlaardermeer, Meerweg 58, 9606 PP Kropswolde, The Netherlands  
phone: +31 (0)598-322479  
Mail: [info@zvzuidlaardermeer.nl](mailto:info@zvzuidlaardermeer.nl)

## **4 [DP] CODE OF CONDUCT**

- 4.1** Competitors and support persons shall comply with reasonable requests from race officials.
- 4.2** Competitors and support persons shall handle any equipment provided by the organizing authority with care, seamanship, in accordance with any instructions for its use and without interfering with its functionality.

## **5. SIGNALS MADE ASHORE**

- 5.1** Signals made ashore will be displayed at the flagpole in front of the clubhouse
- 5.2** When flag AP  is displayed ashore, '1 minute' is replaced with 'not less than 30 minutes' in the race signal AP.



## 6 SCHEDULE OF RACES

### 6.1

| <i>Date</i>      | <i>Olympiajol</i> | <i>First warning signal</i> |
|------------------|-------------------|-----------------------------|
| <i>August 22</i> |                   | .                           |
| <i>August 23</i> | <i>3 races</i>    | 11.55 hr.                   |
| <i>August 24</i> | <i>4 races</i>    | 09.55 hr.                   |
| <i>August 25</i> | <i>3 races</i>    | 09.55 hr.                   |

**6.2** One extra race per day may be sailed, provided that no class becomes more than one race ahead of schedule and the change is made according to SI 2.1.

**6.3** To alert boats that a race or sequence of races will begin soon, the orange starting line flag will be displayed with one sound at least five minutes before a warning signal is made.

**6.4** On the last scheduled day of racing no warning signal will be made after *15.00 hr*

## 7\* CLASS FLAGS

**7.1** When at the entry closing date less than 41 entries are registered the class flag will be flag W

When at the entry closing date 41 or more entries are registered the class flag for:

group One (1) will be Yellow (See Addendum K, c)

group Two (2) will be Blue (See Addendum K, c)

The class flag for the :

Gold fleet will be Yellow

Silver fleet will be Blue

## 8 RACING AREA

**8.1** SI Addendum C shows the location of the racing area.

## 9 COURSES

**9.1\*** The diagram(s) in SI Addendum A show(s) the courses, including the approximate angles between legs, the order in which marks are to be passed, and the side on which each mark is to be left. The approximate course length is 50 minutes.

**9.2** No later than the warning signal, the race committee vessel will display the course by a white sign with Roman numbers I, II, III, IV on the port of the starting vessel.

## 10 MARKS

**10.1\*** Marks 1, 2, 3, 4 will be Yellow inflatable marks

**10.3\*** The starting marks will be a dan buoy with orange flag at Port -end and an orange flag on board of the starting vessel at Starboard end.

The finishing marks will be a dan buoy with blue flag at Port -end and a blue flag on board of the Finishing ship at Starboard end.

**10.4** A race committee vessel signaling a change of a leg of the course is a mark as provided in SI13.2.

**10.5** The following marks are rounding marks: *Yellow cylinder buoys, appr. 5ft high, numbered 1, 2, 3 or 4*

**10.6** The ILM will be a red skippy ball



## 11 OBSTRUCTIONS

### 11.1 Spare

## 12 THE START

**12.2** The starting line is between a dan buoy with a orange flag at Port -end and an orange flag on board of the starting Vessel at Starboard end.

**12.3** Boats whose warning signal has not been made shall avoid the starting area during the starting sequence for other races.

**12.4** A boat that does not start within *Four (4)* minutes after her starting signal will be scored Did Not Start without a hearing. This changes RRS A5.1 and A5.2.

**12.5** On the starboard site of the starting line will be an ILM. This must be kept starboard while starting. It is prohibited passing in between this ILM and the starting vessel after the warning signal.

## 13 CHANGE OF THE NEXT LEG OF THE COURSE

**13.1** To change the next leg of the course, the race committee will move the original mark or the finishing line to a new position.

**13.2** Except at a gate, boats shall pass between the race committee vessel signaling the change of the next leg and the nearby mark, leaving the mark to port and the race committee vessel at starboard. This changes RRS 28

## 14\* THE FINISH

**14.1** The finishing line is between staffs displaying blue flags on the finishing marks.

## 15 PENALTY SYSTEM

**15.1** The right of appeal from a protest committee decision is denied in the qualifying races as provided in RRS 70.3 [(b)][(c)][(d)]

## 16 TIME LIMITS [AND TARGET TIMES]

**16.1** The Mark 1 Time Limit, Race Target Time (see RRS 35), and the Finishing Window are shown in the table below.

| Mark 1 Time Limit | Race target time  |  | Finishing Window  |
|-------------------|-------------------|--|-------------------|
| <i>20 minutes</i> | <i>50 minutes</i> |  | <i>15 minutes</i> |

**16.2** If no boat has passed Mark 1 within the Mark 1 Time Limit the race will be abandoned.

**16.3** The Finishing Window is the time for boats to finish after the first boat sails the course and finishes. Boats failing to finish within the Finishing Window, and not subsequently retiring, penalized or given redress, will be scored Time Limit Expired (TLE) without a hearing. A boat scored TLE shall be scored points for the finishing place One (1) more than the points scored by the last boat that finished within the Finishing Window. This changes RRS 35, A5.1, A5.2 and A10.

**16.4** Failure to meet the Target Time will not be grounds for redress. This changes RRS 61.4 (b)(1)



## **17 HEARING REQUESTS**

- 17.1** The protest time limit is 45 minutes after the last boat finishes the last race of the day or the race committee signals no more racing today, whichever is later. The time will be posted on the official notice board.
- 17.2** Hearing request forms are available from the race office at *the clubhouse of Zeilvereniging Zuidlaardermeer*.
- 17.3** Notices will be posted no later than 30 minutes after the protest time limit to inform competitors of hearings in which they are parties or named as witnesses. Hearings will be held in the protest room, located at *the clubhouse of Zeilvereniging Zuidlaardermeer*, beginning at the time posted.

## **18 [NP][DP] SAFETY REGULATIONS**

- 18.2** [DP] A boat that retires from a race shall notify the race committee at the first reasonable opportunity.

## **19 REPLACEMENT OF CREW OR EQUIPMENT**

- 19.1\*** Replacement of the responsible person is not allowed.
- 19.2** Substitution of marked damaged or lost equipment will not be allowed unless approved by the race committee. Requests for substitution shall be made to the committee at the first reasonable opportunity, which may be after the race.

## **20 EQUIPMENT CHECKS AND MEASUREMENT CHECKS**

- 20.1** A boat or equipment may be inspected at any time for compliance with the class rules, notice of race and sailing instructions.
- 20.2** [DP] When instructed by a race official on the water, a boat shall proceed to a designated area for inspection.
- 20.3** On Friday, and by exception on Saturday ( NoR: Competitors shall apply for the Saturday control before the 18<sup>th</sup> August 2025 (23.59 hr) by the measurement committee by email: [uitrustingscontrole@gmail.com](mailto:uitrustingscontrole@gmail.com)), previous for the championship boats may be checked on the next parts:

- Top of the boom and black band
- Mast bolt sail track
- Presence of compensation weight
- Safety equipment

When changes are done to the hull other than usual it shall be mentioned by the owner at the Royal Nederlands Watersport Association (RNWA)

## **21 SUPPLIED BOATS**

**Spare**

## **22 OFFICIAL VESSELS**

- 22.1** Official vessels will be identified as follows: orange flag with "R"



## **23 [DP] SUPPORT TEAMS**

- 23.1** Team leaders, coaches and other support persons shall stay outside areas where boats are racing from the time of the preparatory signal for the first start until all boats have finished or retired or the race committee signals a postponement, general recall or abandonment.

## **24 TRASH DISPOSAL**

- 24.1** Trash may be placed aboard official boats.

## **25 ORGANISATION**

The race officer is : Dick Kramer  
The chairman of the protest committee is : Eric Mehlbaum  
The second member of the protest committee is : Peter Nannenberg  
The chairman of the technical committee is : JJ Korpershoek



## ADDENDUM K; Qualifying Races

If stated in the Sailing Instructions qualifying races will be scheduled in the mentioned classes according to sailing instructions Addendum K.

- a. De groups are composed on the basis of the results of the Dutch Championships/ Annual trophy of last year using the system:

| Group 1 | Group 2 | Group 3 | Group 4 |
|---------|---------|---------|---------|
| 1       | 2       | 3       | 4       |
| 8       | 7       | 6       | 5       |
| Etc.    |         |         |         |

Sail numbers, not mentioned in the results of last year will be added in numeric order to the groups.

- b.. In the qualifying races is the start of Group II- the amount of boats as stated in the Sailing Instructions- 5 (Five) minutes after a valid start of Group I. In the final races is the start of the Silver fleet the amount of boats as stated in the Sailing Instructions 5 ( Five) minutes after a valid start of the Gold fleet.
- c.. The Sub Groups are sailing qualifying races according to this schedule:

| Qualifying Race | Group I            | Group II           |
|-----------------|--------------------|--------------------|
| 1               | Sub Groups a and b | Sub Groups c and d |
| 2               | Sub Groups b and d | Sub Groups a and c |
| 3               | Sub Groups a and d | Sub Groups b and c |
| 4               | Sub Groups a and b | Sub Groups c and d |
| 5               | Sub Groups b and d | Sub Groups a and c |
| 6               | Sub Groups a and d | Sub Groups b and c |

- d. After the qualifying races boats will be assigned to final-series fleets Gold and Silver. If three qualifying races are completed, the worst result in the qualifying races will (temporarily) be discarded. If less than three races are completed, the ranking is based on the results without discard.
- e. There will be the same number of fleets in the final series as in the qualifying series. The final-series fleets will have, as nearly as possible, equal size but so that the Silver fleet is not larger than the Gold fleet. Boats with the best qualifying-series ranks will race all final-series races in the Gold fleet, boats with the next-best qualifying-series ranks will race in the Silver fleet.
- f. As long as three qualifying races are completed on the date stated in the Sailing Instructions, the assignment to Gold- and Silver fleet will be posted the following day before 0900 a.m.. If at that time only two or less qualifying races are completed, the races on the next day are also qualifying races until three races are completed. The assignment to Gold- and Silver fleet will be announced as soon as possible.

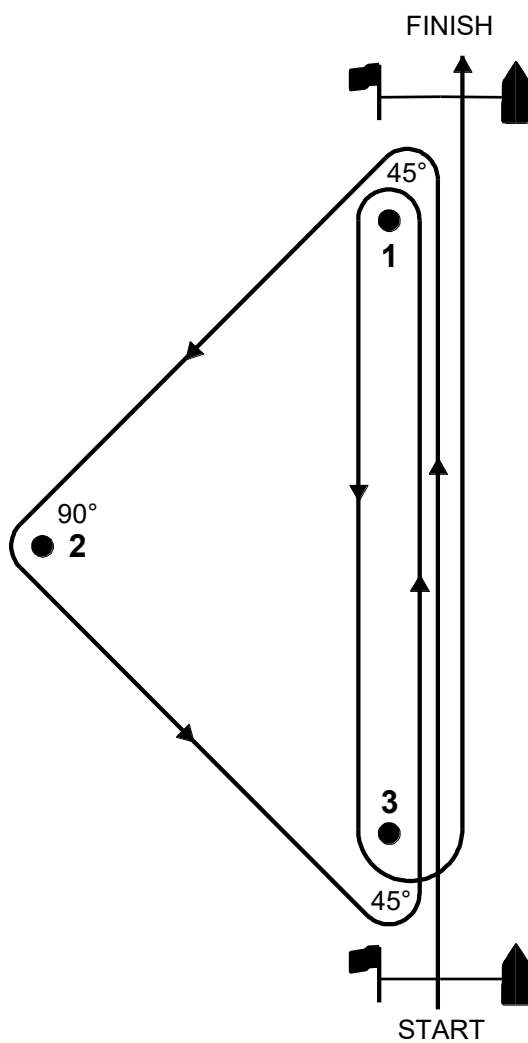


- g. If after one day before the last day of racing only two qualifying races are completed, the assignment to the Gold and Silver fleet will be made after one day before the last day on the basis of two qualifying races. The assignment to Gold- and Silver fleet will be posted the following day before 9.00 a.m.

If after one day before the last day of racing only less than two qualifying races are completed, the qualifying series will be extended until two valid races are completed. The assignment to Gold- and Silver fleet will be posted as soon as possible.
- h. Points for letter scores as mentioned in RRS 10 are the same as points given in the biggest possible fleet +1. This changes RRS A4.
- i. Scores in the qualifying series are carried forward to the final series.

## ADDENDUM A , courses

### A Windward-Leeward-Triangle Course



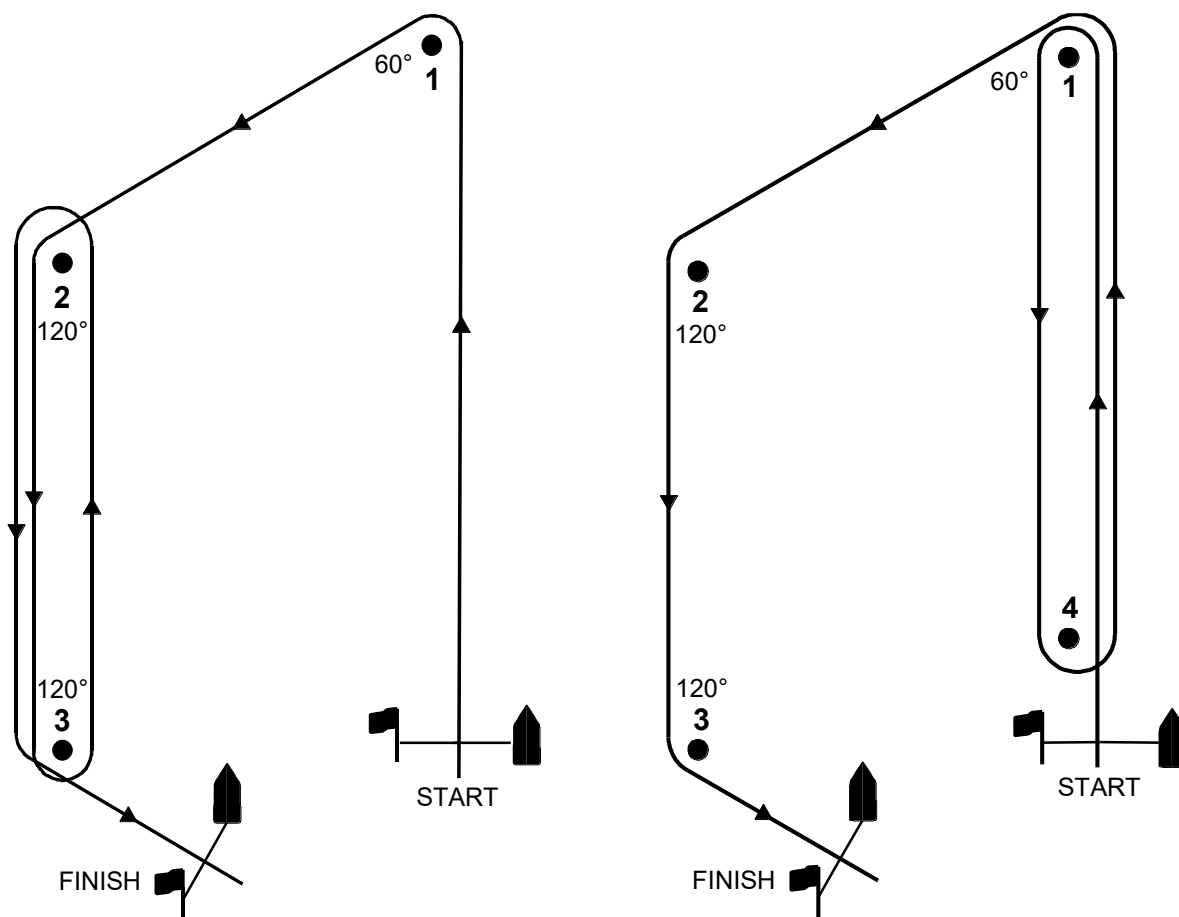
**Course I: Start – 1 – 2 – 3 – 1 – 3 – Finish**

**Course II: Start – 1 - 2 – 3 – 1 – 3 - 1 – 2 – 3 - Finish**

**Course III: Start – 1- 2 – 3 – 1 – 3 - 1 – 2 – 3 - 1 – 3 - Finish**



## Trapezoid Courses



**Course I: Start - 1 - 2 - 3 - 2 - 3 - Finish**  
**Course II :Start - 1 - 4 - 1 - 2 - 3 - Finish**  
**Course III: Start - 1 - 2 - 3 - 2 - 3 - 2 - 3 - Finish**  
**Course IV: Start- 1 - 4 - 1 - 4 - 1 - 2 - 3 - Finish**

## Addendum C, location of racing Area

