



NOTICE OF RACE
[Open] Dutch Championship
OLYMPIA Jol class
organised by Zeilvereniging Zuidlaardermeer
under the auspices of the RNWA
from August 22 to August 25 (inclusive) 2025
location: Zuidlaardermeer, Netherlands

The notation '[NP]' in a rule means that a boat may not protest another boat for breaking that rule. This changes RRS 60.1.

1 RULES

- 1.1*** The event is governed by the rules as defined in *The Racing Rules of Sailing (RRS)*. The Prescriptions of the RNWA can be found at [World Sailing - Racing Rules of Sailing](#)
- 1.2*** The '[Rules for \(Open\) Championships Sailing, Windsurfing and Kiteboarding](#)' will apply.
- 1.3** Racing Rule 60.1 will be changed to:
A boat or committee may protest a boat, but a boat may not protest a boat under RRS 78.1 where the hull is concerned.
- 1.4** If there is a conflict between languages the text in the English language will take precedence.
- 1.5*** Every person on board who has his domicile in the Netherlands shall have the appropriate license.
- 1.6*** The GDPR declaration which can be found at www.zvzuidlaardermeer.nl/ clubinfo/privacyverklaring.

2 SAILING INSTRUCTIONS

- 2.1** The sailing instructions will be available on 11th of July 2025 on www.olympiajol.nl

3 COMMUNICATION

- 3.1** While racing, except in an emergency, a boat shall not make voice or data transmissions and shall not receive voice or data communication that is not available to all boats.

4* ELIGIBILITY AND ENTRY

- 4.1** The event is open to all boats of the Olympia-jol class.
- 4.2** Boats may enter the event by registering online before 18th of August, 23.59 Hr. at www.olympiajol.nl.
The required fee shall be transferred to the following bank account:
IBAN NL57ABNA0608 3993 45, Zeilvereniging Zuidlaren. Please state class and sail number.
Online registration closes after 18th of August, 23.59 hr.
- 4.3** To be considered an entry in the event, a boat shall complete all registration requirements and pay all fees.
- 4.6** Late entries will be accepted under the following conditions: € 20,- extra Fee

5 FEES

5.1 Entry fees are as follows:

Class	Early Entry Fee until	Standard Fee
<i>Olympiajol</i>	€175,-	€175,-

5.2 Other fees:
Not applicable

6 **CREW LIMITATIONS**
Not applicable

7 ADVERTISING

7.1 Boats may be required to display advertising chosen and supplied by the organizing authority.

8 QUALIFYING SERIES AND FINAL SERIES

8.1 When on the closing day August 18th, 41 (Fourty-one) boats have entered, the event will consist of a qualifying series and a final series.
The qualifying races are on August 23 and August 24.

8.2 Addendum K of the template standard Sailing Instructions of the RNWA applies.

9 SCHEDULE

9.1 Registration:

Date	From	To
August 22	11.00 hr	21.00 hr
August 23	08.00 hr	10.00 hr

9.2 Equipment inspection and event measurement:

Day and date:

Date	From	To
August 22	11.00 hr	18.00 hr
August 23	08.00 hr	10.00 hr

Measurement on August 23 only with permission of the technical committee

9.3* Dates of racing:

Date	<i>Olympiajol</i>	<i>First warning signal</i>
<i>August 22</i>		
<i>August 23</i>	<i>3 races</i>	<i>11.55 hr.</i>
<i>August 24</i>	<i>4 races</i>	<i>09.55 hr.</i>
<i>August 25</i>	<i>3 races</i>	<i>09.55 hr.</i>

On August 23 and August 24 the race committee may decide to sail one extra race

9.4* On the last day of the regatta no warning signal will be made after 15.00 hr..

10 EQUIPMENT INSPECTION

- 10.1* Each boat shall produce or verify a valid measurement form and measurement certificate.

Note: A valid measurement certificate does not automatically imply that the boat comply with the actual class rules (RRS 78.1).

- 10.2 Boats may be inspected at any time.

- 10.3 Boats will be assigned a time slot for equipment inspection of boat and equipment. Participants can indicate a preference for a specific time slot by registering via the registration form on the event website www.olympiajol.nl

Registration will open on Friday, July 11 at 12:00 AM.

Competitors who, for urgent reasons, cannot present their boat for inspection on Friday 22nd can submit a request to the technical committee for a time slot on Saturday, August 23rd. This request shall be submitted by email: uitrustingscontrole@gmail.com before August 18th 2025 stating the urgent reason for the request.

- 10.4 [DP] Boats shall be available for equipment inspection from Friday August 22 2025, 15 minutes before the start of the time slot assigned tot he boat.
- 10.5 The following equipment may be inspected or measured:
- Top of the boom and black band
 - Mast bolt sail track
 - Presence of compensation weight
 - Safety equipment
- 10.6 [DP] Boats shall also comply with RRS 78.1 when presented for inspection from 22th August 2025, 11.00 hr.

- 11 **CLOTHING AND EQUIPMENT**
not applicable

12 VENUE

- 12.1 The race office is located at the following address: Zeilvereniging Zuidlaardermeer, Meerweg 58, 9606 PP Kropswolde, The Netherlands. Phone: +31 598 322479

- 12.2** NoR Addendum A shows the plan of the event venue.
- 12.3** NoR Addendum B shows the location of the racing areas.
- 12.4** NoR Addendum C shows the courses
- 12.5** NoR Addendum D shows the location and plan of the equipment inspection

13 COURSES

- 13.1** The courses to be sailed will be as follows:
In case of 1 (One) starting group: Windward- Leewards-Triangle Course
In case of 2 (Two) starting groups: Trapezoid Courses with Inner- and Outerloop

14 PENALTY SYSTEM

Not Applicable

15 SCORING

- 15.1*** **Four races** are required to be completed to constitute a championship.
- 15.2** (a) When fewer than 5 races have been completed, a boat's series score will be the total of her race scores.
(b) When 5, 6, 7 or 8 races have been completed, a boat's series score will be the total of her race scores excluding her worst score.

This changes App A 2.1

- 15.3** RRS 90.3(e) applies, only for the final results.

16 [DP] SUPPORT PERSON VESSELS

Not Applicable

17 CHARTERED OR LOANED BOATS

Not Applicable

18 [DP] BERTHING

- 18.1** Boats shall be kept in their assigned places in the harbour of ZV Zuidlaardermeer

19 [DP] HAUL-OUT RESTRICTIONS

Not Applicable

20 [DP] DIVING EQUIPMENT AND PLASTIC POOLS

Not Applicable

21 RISK STATEMENT

- 21.1** RRS 3 states: 'The responsibility for a boat's decision to participate in a race or to continue to race is hers alone.' By participating in this event each competitor agrees and acknowledges that sailing is a potentially dangerous activity with inherent risks. These risks include strong winds and rough seas, sudden changes in weather, failure of equipment, boat handling errors, poor seamanship by other boats, loss of balance on an unstable platform and fatigue resulting in increased risk of injury. Inherent in the sport of sailing is the risk of permanent, catastrophic injury or death by drowning, trauma, hypothermia or other causes.
- 21.2** The organizing authority will not accept any liability for material damage or personal injury or death sustained in conjunction with or prior to, during, or after the regatta.

22 INSURANCE

- 22.1 Each participating boat shall be insured with valid third-party liability insurance with a minimum cover of Euro 1.500.000 or the equivalent per incident.

23 PRIZES

- 23.1* The RNWA supplies for the winning boat or team a blue pennant and a medal for every member of the crew of the first three boats or crews (there will be no extra medals available for changes in the crew during the event).
- 23.2 Other prizes will be given as follows:
In case of 1 (One) starting group: There is a prize for the first ten sailors
In case of 2 (Two) starting groups: Gold fleet, there is a prize for the first five sailors
Silver fleet, there is a prize for the first five sailors

24 FURTHER INFORMATION

- 24.1 For further information please contact: www.olympiajol.nl

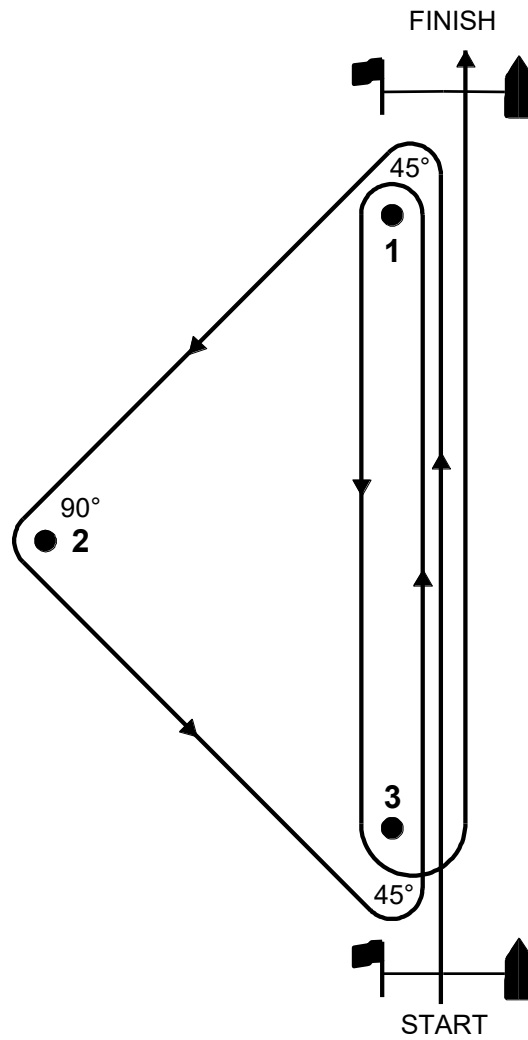
Addendum A: the map of the event venue



Addendum B: the location of the racing area



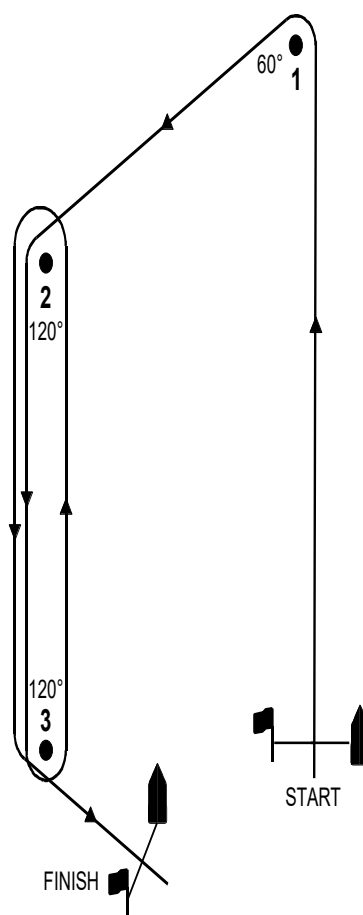
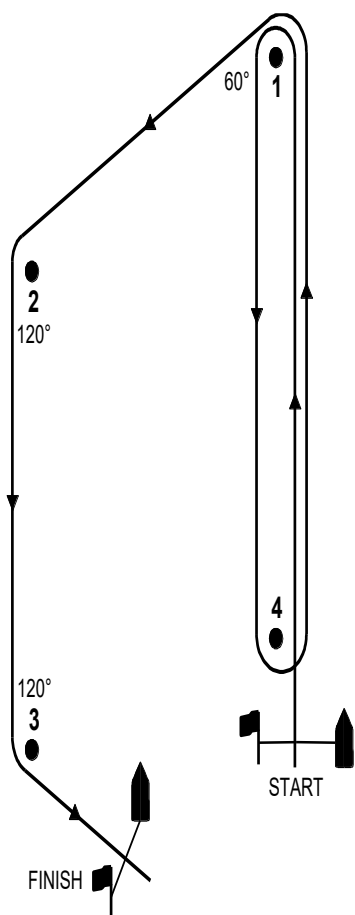
Addendum C: the courses



Course I: Start – 1 – 2 – 3 – 1 – 3 – Finish

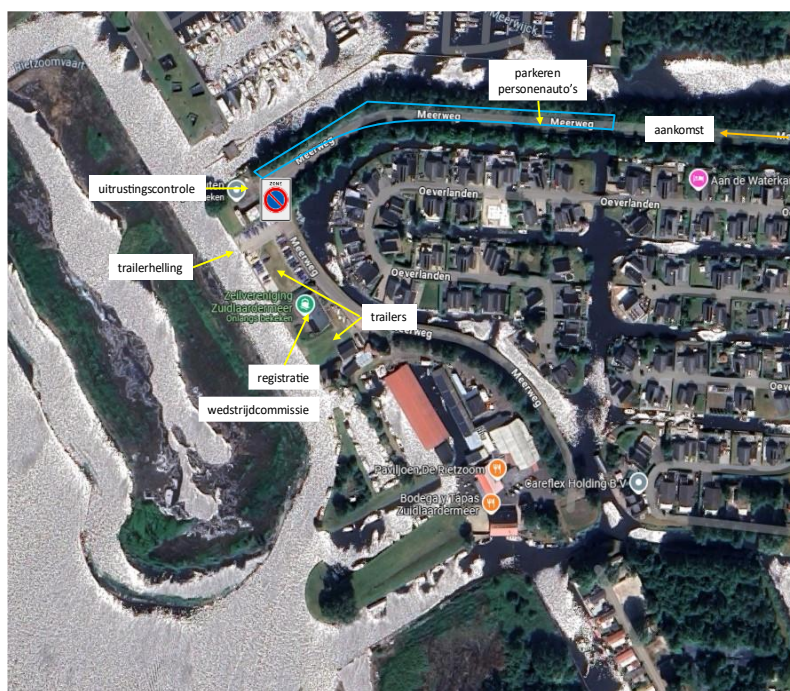
Course II: Start – 1 - 2 – 3 – 1 – 3 - 1 – 2 – 3 - Finish

Course III: Start – 1- 2 – 3 – 1 – 3 - 1 – 2 – 3 - 1 – 3 - Finish



Course I: Start – 1 – 2 – 3 – 2 – 3 – Finish
Course II :Start – 1 – 4 – 1 – 2 – 3 – Finish
Course III: Start – 1 – 2 – 3 – 2 – 3 – 2 – 3 – Finish
Course IV: Start– 1 – 4 – 1 – 4 – 1 – 2 – 3 – Finish

Addendum D: the location and plan of the equipment inspection



ONK2025
Olympiajol
Zeilvereniging
Zuidlaardermeer
22 aug – 25 aug 2025



Plattegrond locatie

Parkeren personenauto's:
Meerweg aansluitend
langsparkeren

Parkeren trailers:
Op het terrein van Zeilvereniging
Zuidlaardermeer

Campers:
n.t.b.

Tenten:
n.t.b.



ONK2025
Olympiajol
Zeilvereniging
Zuidlaardermeer
22 aug – 25 aug 2025



Plattegrond locatie Uitrustingscontrole

- Uitrustingscontrole vindt plaats bij station 1 en 2.
- Alleen toegankelijk voor te controleren boten
- Publiek / familie worden verzocht op afstand te blijven